



2006 AKA MANUAL

ADDENDUM No. 4

Issued: 1 January 2006

To be implemented immediately

Chapter 43 – YAMAHA 100 TAG Class as approved at the NKC/Industry Meeting held on 18 December 2005.

Pam Arnett
National Secretary/National Events Coordinator
Australian Karting Association

EXPERIMENTAL CLASS

Experimental YAMAHA 100 TAG Class has been sanctioned by the National Karting Council. The following specifications have been provided by the AKA for the conduct of this class as non-championship events/series but may be a support class to a series.

CHAPTER 43 - YAMAHA 100 TAG CLASS

PREAMBLE

This class will be out of the box racing, with no modifications allowed to the engine. The spirit and intent of this class is to provide a class to be used as a stepping-stone to the sport without the pressures of championship racing beyond club and zone level. The motor selected is in the modern idiom of electric start with a centrifugal clutch for ease of operations with limitations and controls. The motor has a low wear factor and is designed for long prolonged low maintenance use, ideal for club use and for the club driver who just wants to race at his local area over long periods.

ENGINE ELIGIBILITY

Yamaha Model KT100SEC 100cc (pre-fix 7YK) Electric Start only. Neither the engine or any of its ancillaries may be modified in any way likely to improve performance unless specifically within these rules.

PART 1

This section covers the KT100SEC series engines which conforms to the Yamaha Specifications as approved by the A.K.A. Any alterations / modifications are strictly prohibited except as specifically authorised within these rules.

DISPLACEMENT

97.6cm³, BORE 52.00mm, STROKE 46mm.

CYLINDER

The engine Cylinder must be marked with 7ET. No modifications or grinding is permitted.

CYLINDER HEAD

Must be of original engine manufacturer and mark with the word YAMAHA & conform to drawings supplied by manufacturer.

CRANKCASE, CRANKSHAFT & CONROD

Must be of original engine manufacturer and conform to drawings supplied by manufacturer.

CARBURETTOR

Walbro Model WB3A as supplied with engine, NO modifications allowed (no flex jets).

MUFFLER

AKA39 Muffler Powermac (2006 Clubman)

HEADER PIPE

Must be as supplied with engine, NO modifications allowed.

IGNITION

Yamaha TCI as supplied with engine.

PISTON

Piston max size 52.75mm & must be a genuine Yamaha piston, supplied by Yamaha.

CLUTCH

Yamaha racing clutch 11T, engagement at 3000rpm (marked with CIK/92 YAM).

ELECTRICAL WIRING & STARTER

Must be as supplied with engine and battery.

GAUGES

Tacho and timing only. No temperature probes or sensor.

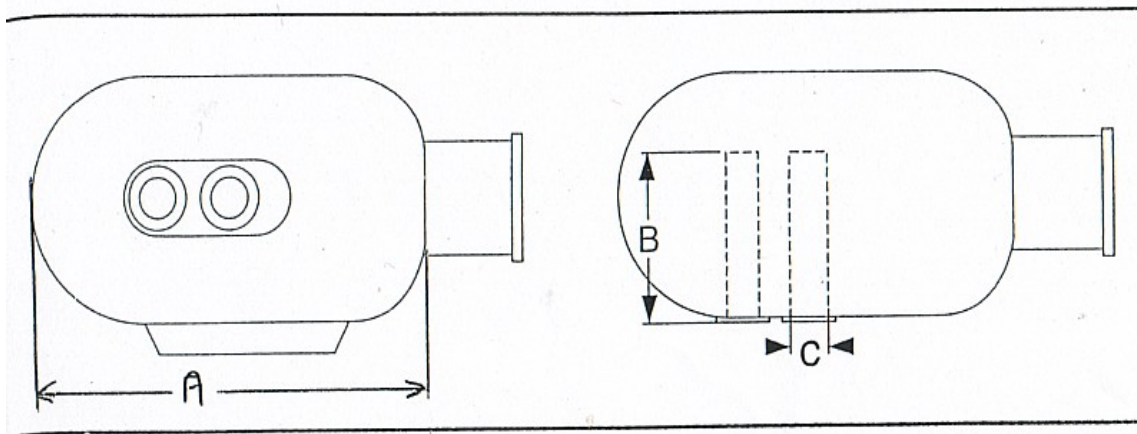
AIR BOX ADAPTOR

Air box adaptor must be original Yamaha as supplied with the engine.

AIR BOX (NOISE INDUCTION SILENCER DIAGRAM)

(DIAGRAM TO BE INSERTED)

NOISE INDUCTION SILENCER DIAGRAM



Legend

- a. Body 270mm +/- 10mm
- b. Baffle Tube Length 95mm minimum
- c. Baffle Tubes I.D. 23mm max (at the opening).

Note: A No-Go Gauge to measure Items (c) and (b) on the Noise Induction Silencer is available from any State Office.

1. The only inlet Silencer for this class must meet all the requirements of above, and registration by AKA is compulsory.
2. All inducted air must pass through the baffle tube/s into the Induction Silencer and to the carburettor via a sealed connection
3. An air filter or filter screen may be fitted to reduce entry of foreign matter. The use of an internal filter is permitted.
4. Air tubes may be partly or completely blocked at the entrance hole only, and the restriction component must be easily removed for inspection
5. No adjustable systems are allowable
6. It is permissible to drill a single 5mm drain hole.

CHASSIS

The kart is to conform to the general kart formula as detailed in chapter 25 of the AKA Karting manual except where specifically mentioned in this chapter.

BRAKING

Front wheel brakes are not permitted. NO ABS allowed.

AXLE

40mm only.

FUEL

Refer to Chapter 22.

TYRES

SL1 approved tyre for this class. If they choose to run in Clubman then the competitor has a choice.

WHEELS

Front: Edward Spoke F117S-5FUT

Rear: Edward Spoke R200-5FUT

HUBS

Alloy only no magnesium.

DRIVER LIMITATION

To be eligible to compete in this class a competitor must hold a C Provisional, C Grade and Over 40yrs B Grade Licence.

WEIGHT

TAG Yamaha 100S – 160kg

NON-TECH ITEMS

Exhaust joint, cable ties, Seals, main bearing, fasteners, washers & spark plugs, Piston Rings and O-Rings.

INTERNAL ADDITIONS

- (a) The use of thermal barrier coatings / ceramic coatings on or in the engine / engine components and on or in exhaust components is prohibited.
- (b) The use of anti friction coatings on or in the engine / engine components is prohibited.